

# DECK2WALL<sup>®</sup> spacer

DECK LEDGER SPACERS

**DON'T LET YOUR DECK  
ROT YOUR HOUSE!**

Deck2wall<sup>®</sup> Spacers will help prevent rot by providing drainage and airflow. Poorly designed ledger connections can trap moisture between your deck and house, which can lead to decay. This condition causes costly repairs to your home and is often a contributing factor when a deck collapses.

## IAS ACCREDITED LAB TESTED

\*No pilot holes\*

\*Rugged, durable, non corrosive\*

\*Faster, easier and stronger than stacked washers\*

**DECK LEDGERS, SHADE STRUCTURES,  
POSTS, STAIR STRINGERS, LANDINGS....**

*Verify local codes prior to installation.*

## Installation Guide - Model D2W38-SWS

Size 2" Diameter X 1/2" Thick Material - Glass Filled Polypropylene

1. Cut ledger to length and lay out deck joists on ledger.
2. Lay out fastening pattern for specific structural wood screw to be used.
3. Drive structural wood screws into ledger until they penetrate about 1/4" through the back of the ledger.
4. Place spacers over protruding screw tips and fasten with 3 - #8 x 1 5/8" Phillips Square-Drive<sup>®</sup> or GuardDog<sup>®</sup> screws or equal. Use only premium exterior coated or 300 series stainless steel (Grip-Rite<sup>®</sup> PrimeGuard MAX<sup>®</sup>), 1 5/8" minimum length, #8 or larger.
5. Apply sealant to spacers.
6. Carefully position ledger in it's desired location and drive structural wood screws into structure.

Use only approved fasteners for deck ledger applications. Fasteners shall be located in accordance with the D2W38 Fastening Table or to that of the specific fastener manufacturer's installation requirements.

**Approved Fasteners: Simpson Strong-Tie<sup>®</sup> SDWS and FastenMaster<sup>®</sup> LedgerLOK<sup>®</sup>.** Visit [www.deck2wallspacer.com](http://www.deck2wallspacer.com) or contact Deck2wall, Inc. for more information.

## Important Fastener Information

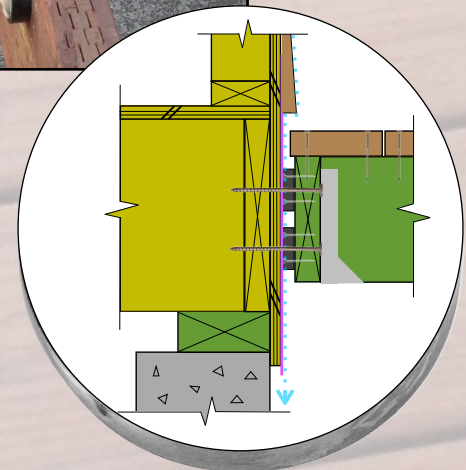
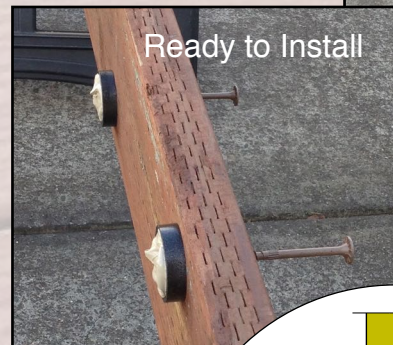
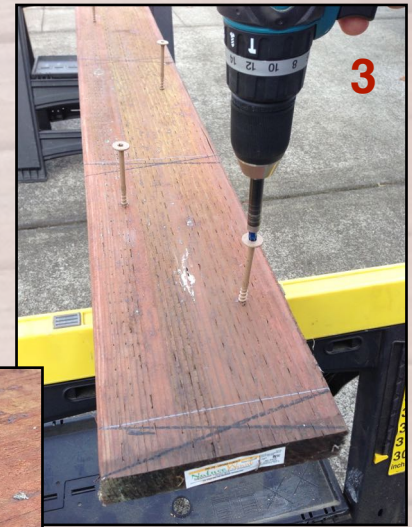
*The D2W38 fastening table on reverse side applies only to Simpson Strong-Tie<sup>®</sup> Model SDWS22500DB*

*When using FastenMaster<sup>®</sup> LedgerLOK<sup>®</sup>, refer to FastenMaster Technical Bulletin - Deck Ledger to Rim Joist for spacing requirements.*

Phillips Square-Drive<sup>®</sup>, GuardDog<sup>®</sup>, Simpson Strong-Tie<sup>®</sup>, FastenMaster<sup>®</sup>, LedgerLOK<sup>®</sup>, Grip-Rite<sup>®</sup>, and PrimeGuard MAX<sup>®</sup> are registered trademarks of their respective companies.

# SWS

Designed for  
**Structural  
Wood  
Screws**



**Deck2wall, Inc.**

Rohnert Park, CA 94928

Toll Free 888 577-2237

[www.deck2wallspacer.com](http://www.deck2wallspacer.com)

U.S. Patents 6,945,004 and 8,087,207



The fastening table below is based on test data from an ICC-IAS accredited test lab. Testing was performed using established methods which are the basis for the deck ledger connection provisions in R502.2.2.1 of the 2009 IRC and R507.2 of the 2012 IRC.

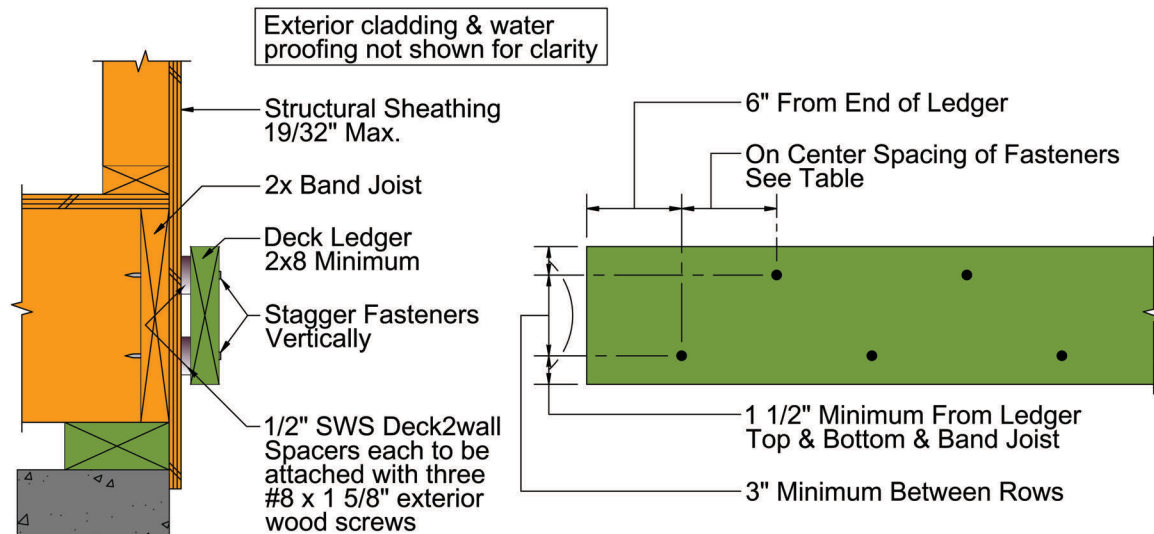


## Deck Ledger Fastening Table for Deck2wall® Spacer Model #D2W38

Deck ledger shall be minimum 2 x 8 nominal sawn lumber, pressure preservative treated Hem-Fir, Douglas Fir or Southern Pine. Band joist shall be nominal 2x solid sawn SPF, Hem-Fir, Douglas Fir or Southern Pine. See footnote 3 for fastener specification.

40 PSF Live Load and 10 PSF Dead Load		60 PSF Live Load and 10 PSF Dead Load						
Joist Span		Up to 6 ft.	Up to 8 ft.	Up to 10 ft.	Up to 12 ft.	Up to 14 ft.	Up to 16 ft.	Up to 18 ft.
Connection Details		Loading Condition	Maximum on center spacing of fasteners (inches)					
1/2 inch Deck2wall® Spacers <sup>1</sup> 19/32 inch maximum sheathing <sup>2</sup> 0.220 inch diameter SST screw <sup>3 4</sup>	40 / 10	36	29	23	19	16	14	13
	60 / 10	28	21	16	14	12	10	9

- Deck2wall® Spacers SWS Model D2W38 shall be installed to ledger with 3 - #8 x 1 5/8" Phillips Square-Drive® or GuardDog® screws or equal. Use only premium exterior coated or 300 series stainless steel (GripRite® PrimeGuard MAX®), 1 5/8" minimum length, #8 or larger. Screws must provide suitable corrosion resistance for the preservative treated lumber and environmental conditions.
- Maximum 5/8" nominal wood structural sheathing shall be fastened per code.
- Structural wood screw shall be Simpson Strong-Tie® Strong Drive® Model SDWS22500DB.
- "Rows of screws shall be vertically offset and evenly staggered. Screws shall be placed 1 1/2" to 2" from the top and bottom of the ledger or rim board with 3" minimum and 6" maximum between rows and spaced per the table. End screws shall be located 6" from the end and at 1 1/2" to 2" from the bottom of the ledger. For screws located at least 2" but less than 6" from the end, use 50% of the load per screw and 50% of the table spacing between the end screw and the adjacent screw, and for screws located between 2" and 4" from the end, predrill using a 5/32" drill." Source - Simpson Strong-Tie® Fastening System Catalog 2017 - Page 293.



Tested at ICC-IAS accredited Composite Materials and Engineering Center (CMEC) at Washington State University. Phillips Square-Drive®, GuardDog®, Simpson Strong-Tie®, Strong-Drive®, GripRite® and PrimeGuardMAX® are registered trademarks of their respective companies.

**Effective January 1, 2016**  
Check our website or contact Deck2wall, Inc. to ensure this is the most recent version of our fastening table.

**Deck2wall, Inc. - Rohnert Park, California**  
**Toll Free 888 577-2237 www.deck2wallspacer.com**  
Deck2wall® Spacer US Patents 6,945,004 and 8,087,207